



619 E 19TH St., Kansas City, MO 64108-1743

**Material Handling & Meat Packing Equipment  
Specialists in Stainless Steel  
& Aluminum Fabrication**



**Toll Free Number  
877-742-9090**

**Local Number  
816-842-9090**



Proudly Made In The USA



*We Gladly Accept*

**Email us at:**

**[sales@dc-tech-inc.com](mailto:sales@dc-tech-inc.com)**

**Visit our website at:**

**[www.dc-tech-inc.com](http://www.dc-tech-inc.com)**

All product specifications shown within can be found on our website for downloading and printing.

# Dump Buggies



## V-Edge Dump Buggy

- ◆ Our buggies feature fully welded construction that includes a 1" rolled top rim that is reinforced with an internal solid aluminum rod for added strength and rigidity.
- ◆ The Heavy-duty T-304 Stainless Steel body construction includes a reinforced bottom and undercarriage that cross ties the four wheels together for added side to side and front to back strength as well as durability.
- ◆ Stainless Steel drip guards are standard and have closed ends to meet USDA Standards.
- ◆ Equipped with white poly wheels 6" x 2", a replaceable delrin bushing and a T-304 Stainless Steel axle equipped with zerk fitting for applying grease.

**Available with Rolled Rim or Bar Rim**

## V-Edge Dump Buggy Accessories

- ◆ Use our loose fitting Lid to cover any of our dump buggies, it is constructed from heavy-duty T-304 Stainless Steel 16 gauge material. This lid is rust and corrosion resistant.

**Loose Fitting Lid** (Pictured)

**BG201025**

**200# Rolled Rim Without Handle** (Pictured) **BG101051**  
Dimensions without handle: 28" x 28" x 18" (LxWxH)

**400# Rolled Rim Without Handle** (Pictured) **BG101041**  
Dimensions without handle: 28" x 28" x 28" (LxWxH)

**400# Rolled Rim With Handle** **BG101043**  
Dimensions with handle: 32" x 28" x 28" (LxWxH)

**400# Bar Rim Without Handle** **BG101044**  
Dimensions without handle: 28" x 28" x 28" (LxWxH)

**400# Bar Rim With Handle** **BG101045**  
Dimensions with handle: 32" x 28" x 28" (LxWxH)

**600# Rolled Rim Without Handle** **BG101042**  
Dimensions without handle: 28" x 28" x 38" (LxWxH)

**600# Rolled Rim With Handle** (Pictured) **BG101048**  
Dimensions with handle: 32" x 28" x 38" (LxWxH)

**600# Bar Rim Without Handle** **BG101046**  
Dimensions without handle: 28" x 28" x 38" (LxWxH)

**600# Bar Rim With Handle** **BG101047**  
Dimensions with handle: 32" x 28" x 38" (LxWxH)



# Sani Buggy & Accessories



## V-Edge Sani-Buggy

- ◆ Our Two Piece Sani-Buggy with separating bucket & dolly is for those with added sanitary concerns.
- ◆ The body is manufactured from heavy gauge T-304 stainless steel and is fully welded.
- ◆ Stainless Steel lifting lugs and drip guards are standard and drip guards have closed ends to meet USDA Standards.
- ◆ The heavy-duty dolly is also constructed with T-304 Stainless Steel and includes a reinforced undercarriage that cross ties the four wheels together for added side to side and front to back strength as well as durability.
- ◆ Equipped with white poly wheels 6" x 2", a replaceable delrin bushing and a Stainless Steel axle equipped with zerk fitting for applying grease.



- ◆ All feature a 1" rolled top rim that is reinforced with an internal solid aluminum rod for added strength & rigidity.

**400# Rolled Rim Without Handle BG101005**

Dimensions without handle: 28" x 28" x 28.5" (LxWxH)

**400# Rolled Rim With Handle BG101056**

Dimensions with handle: 32" x 28" x 28.5" (LxWxH)

**600# Rolled Rim Without Handle BG101006**

Dimensions without handle: 28" x 28" x 38.5" (LxWxH)

**600# Rolled Rim With Handle BG101057**

Dimensions with handle: 32" x 28" x 38.5" (LxWxH)

## Buggy Wash Stand

- ◆ When it's cleaning time use our single person Dump Buggy Wash Stand.
- ◆ Constructed from T-304 Stainless Steel, this Wash Stand allows buggy to be raised using the lifting lugs, then tilted to the horizontal position. Allowing it to be washed clean and rinsed inside and out.
- ◆ Reduces back strain and injury.
- ◆ Lifts buggy approximately 28" above the floor.
- ◆ Heavy-duty T-304 Stainless Steel.
- ◆ Stainless Steel is corrosion resistant.
- ◆ Ships Knocked Down to save on Freight - Easy Assembly.

Buggy Wash Stand

**BG101007**



**Save On Freight - Drop Shipment Service Available.**

# Trucks

## 500-LB SS Truck



- ◆ Built like our 1100 and 800 lb models with heavy duty 14 gauge T-304 Stainless Steel, our truck bodies are continuously welded for strength.
- ◆ Construction with solid rod reinforcement in the top ends and corners for added strength.
- ◆ Interior welds are Tig welded and glass bead blasted smooth.
- ◆ The exterior is Mig welded for added strength.
- ◆ All sanitary corners have a 1" radius for easy cleaning.
- ◆ Features large 6" x 2" center wheels, which allow truck to turn in tight spaces even with heavy loads and 5" x 2" wheels on each end.
- ◆ Optional Drain & Cap for easy cleaning.
- ◆ Dimension: 21-1/2" x 43" x 16" x 22-1/2" (W x L x H x OAH)

Truck **Without Drain & Cap**

**TKS05001**

Truck **With Drain & Cap** - (as pictured)

**TKS05002**

**5" X 2" End Wheel**

**WC1PW003**

**6" X 2" Center Wheel**

**WC1PW001**

## 500-LB SS Elevated Truck



- ◆ Elevated for "Back Saving" loading and unloading.
- ◆ Built with heavy duty 14 gauge T-304 Stainless Steel our truck body is continuously welded for strength.
- ◆ Construction with solid rod reinforcement in the top ends and corners for added strength.
- ◆ Interior welds are Tig welded and glass bead blasted smooth.
- ◆ The exterior is Mig welded for added strength.
- ◆ All sanitary corners have a 1" radius for easy cleaning.
- ◆ Set atop Four 5" x 2" black poly wheels: 2-rigid, 2-swivel.
- ◆ Features Drain & Cap for easy cleaning.
- ◆ Dimension: 21-1/2" x 43" x 16" x 32" (W x L x H x OAH)

Truck **With Drain & Cap**

**TKS05003**

**5" Diameter Rigid Caster** - Replacement

**WC202003**

**5" Diameter Swivel Caster** - Replacement

**WC201005**

## 800-LB SS Truck



- ◆ Built with heavy duty 14 gauge T-304 Stainless Steel our truck body is continuously welded for strength.
- ◆ Construction with solid rod reinforcement in the top ends and corners for added strength.
- ◆ Interior welds are Tig welded and glass bead blasted smooth.
- ◆ The exterior is Mig welded for added strength.
- ◆ All sanitary corners have a 1" radius for easy cleaning.
- ◆ Features large 14" x 2-1/2" rubber tread center load wheels, which allow for maneuvering over uneven surfaces, even with heavy loads.
- ◆ Optional Drain & Cap for easy cleaning.
- ◆ Dimension: 31" x 46" x 19" x 26-1/2" (W x L x ID x OAH).

Truck **Without Drain & Cap**

**TKS08003**

Truck **With Drain & Cap** - (as pictured)

**TKS08004**

**14" Diameter Wheel**

**WC1MT001**

**5" Diameter Swivel Caster**

**WC201001**

**Contact us with your Custom Made needs.**

**Quantity Discounts Available!**

# Trucks

## 800-LB SS Truck

- ◆ Manufactured with heavy duty 14 gauge T-304 Stainless Steel we continuously weld our truck bodies for strength.
- ◆ Construction with solid rod reinforcement in the top ends and corners for added strength.
- ◆ Interior welds are Tig welded and glass bead blasted smooth for easy cleaning.
- ◆ The exterior is Mig welded for added strength.
- ◆ All sanitary corners have a 1" radius for easy cleaning.
- ◆ Features large 8" x 2" center wheels, which allow truck to turn in tight spaces even with heavy loads and 6" x 2" wheels on each end.
- ◆ Optional Drain & Cap for easy cleaning.
- ◆ Dimension: 31" x 46" x 19" x 27-1/2" (W x L x H x OAH).

Truck **Without Drain & Cap**

**TKS08001**

Truck **With Drain & Cap**

**TKS08002**

**6" X 2" End Wheel**

**WC1PW001**

**8" X 2" Center Wheel**

**WC1PW002**

**Axle Only for White Poly Wheels**

**WC301001**

**Axle Assembly for White Poly Wheels**

**WC301003**



## 1100-LB SS Truck

- ◆ This sturdy truck body is made from heavy duty 14 gauge T-304 Stainless Steel and is continuously welded for strength.
- ◆ The top ends and corners are constructed with solid rod reinforcement for added strength.
- ◆ Interior welds are Tig welded & glass bead blasted smooth.
- ◆ The exterior is Mig welded for added strength.
- ◆ All sanitary corners have a 1" radius for easy cleaning.
- ◆ Features large 14" x 2-1/2" rubber tread center load wheels, which allow for maneuvering over uneven surfaces, even with heavy loads and 5" x 2" Casters on each end.
- ◆ Features Drain & Cap for easy cleaning.
- ◆ Dimension: 31" x 58" x 19" x 28" (W x L x H x OAH).

Truck **With Drain & Cap**

**TKS11002**

**14" Diameter Wheel**

**WC1MT001**

**5" Diameter Swivel Caster**

**WC201001**



## 1100-LB SS Truck

- ◆ This sturdy truck body is made from heavy duty 14 gauge T-304 Stainless Steel & is continuously welded for strength.
- ◆ The top ends and corners are constructed with solid rod reinforcement for added strength.
- ◆ Interior welds are Tig welded & glass bead blasted smooth.
- ◆ The exterior is Mig welded for added strength.
- ◆ Features a 1-1/2" NPT threaded drain for easy cleaning.
- ◆ It is equipped with two swivel and two rigid 6" x 2" casters placed at the four corners.
- ◆ All Sanitary corners have a 1" radius for easy cleaning.
- ◆ Dimension: 31" x 58" x 19" x 28" (W x L x ID x OAH).

Truck **With Drain & Cap**

**TKS11001**

**6" Diameter Rigid Caster - Replacement**

**WC202007**

**6" Diameter Swivel Caster - Replacement**

**WC201006**



**Save On Freight - Drop Shipment Service Available.**



# Trucks

## Platform Truck



- ◆ Our Stainless Steel Platform deck is manufactured from one piece of heavy duty 14 gauge T-304 Stainless Steel material with a 2" turned down edges.
- ◆ Ideal for use in wet or corrosive areas.
- ◆ The 38" "U" shaped handle is easily removable for storage.
- ◆ We have designed a 3 - piece under carriage for added strength.
- ◆ The Platform is then set atop four heavy duty 8" casters, (2 - rigid and 2 - Swivel).
- ◆ 1,200 pound capacity.
- ◆ No assembly required - (Motor Freight only).

**60" x 30" x 12-1/2"** - Stainless Steel

**TK101011**

**Swivel Caster** - 8" Diameter

**WC201007**

**Rigid Caster** - 8" Diameter

**WC202008**

## Beef Paunch Truck

- ◆ Our Beef Paunch truck with removable pluck pan is made of Heavy-Duty 14 gauge T-304 Stainless Steel.
- ◆ Removable pluck pan dimension are 26" x 26" x 3" deep.
- ◆ Truck body has 8" sides with reinforced rim.
- ◆ Overall size is 34" wide x 70" long x 37" high.
- ◆ Features Two 10" load wheels with rubber tread, one 6" swivel caster at rear end of truck.
- ◆ Truck interior is tig welded and glass bead blasted smooth for easy clean up.

**70" x 34" x 37"** (L,W,H) - Stainless Steel

**TK101012**

**Pluck Pan** - Replacement Stainless Steel

**TK201011**

**Wheel 10" x 2.5"** Mold-on Rubber - Repl.

**WC1MT004**

**Swivel Caster 6" x 2"** Polyolefin - Repl.

**WC2010008**



**Contact us with your Custom Made needs.**

**Quantity Discounts Available!**

# Vat & Drum

## ***Stainless Steel Vat***

- ◆ Manufactured with 100% T-304 Stainless Steel this Vat is rust proof and corrosion resistant.
- ◆ The body is constructed with heavy duty 12 Ga. Stainless Steel and the top rim is 1-1/2" hemmed and flanged with reinforced corners.
- ◆ Vat is fabricated with large radius corners for easy clean-out.
- ◆ Interior welds are Tig welded and glass bead blasted smooth for easy cleaning.
- ◆ The exterior is Mig welded for added strength.
- ◆ The fully enclosed legs are constructed with heavy 11 gauge Stainless Steel and are welded to the vertical wall construction to eliminate cracked bottoms.
- ◆ Legs standard length are 7" however length of legs and location of drain plug may be varied at customers request. (Leg height as low as 5" can be requested for transporting the vat with a pallet jack).
- ◆ Optional- 1-1/2" threadless drain & rubber plug.
- ◆ Inside Dimensions: 36" x 48" x 36" (W x L x D")
- ◆ Outside Dimensions: 39" x 51" x 41-3/4"
- ◆ Capacity 2000-lbs, (266 gallons)

### ***Custom Options:***

- |                               |                      |
|-------------------------------|----------------------|
| ◆ 1-1/2" Drain & Threaded Cap | ◆ Stacking Plates    |
| ◆ 1-1/2" Drain & Rubber Plug  | ◆ Lids               |
| ◆ 10Ga Legs W/1/4" Skid Plate | ◆ Material Thickness |
| ◆ Welded ID Numbers on Vats   | ◆ Custom Sizes       |

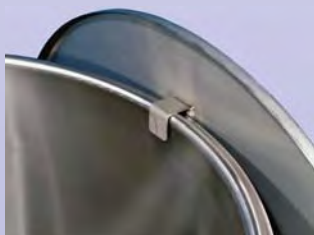
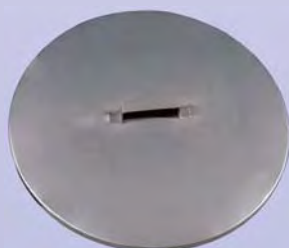


**With Drain & Rubber Plug - Stainless Steel VT101002**  
**Without Drain & Plug - Stainless Steel VT101004**

## ***Stainless Steel Drum***

- ◆ Constructed with rustproof heavy gauge T-304 Stainless Steel this Drum is ruggedly built.
  - ◆ The Interior & exterior finish is polished to food grade quality.
  - ◆ The drum bottom has a heavy duty wear ring and the top has an easy to grip sanitary open rolled rim.
  - ◆ Inside dimension: 22-3/4" Diameter x 35-3/4" high.
  - ◆ **Optional Items: SS Lid with handle and Hook and X-Dolly with four 3" diameter swivel casters.**
- Drum Dimensions: 23" OD x 36-1/2" Height

- |   |                 |
|---|-----------------|
| <b>55 Gallon capacity - Stainless Steel</b>         | <b>DM101001</b> |
| <b>Lid with Handle &amp; Hook - Stainless Steel</b> | <b>DM201002</b> |
| <b>X-Dolly w/Swivel Casters - Stainless Steel</b>   | <b>DL101019</b> |
| <b>Caster 3" Diameter Swivel - Repl.</b>            | <b>WC201015</b> |



***Save On Freight - Drop Shipment Service Available.***

# Processing



## Head Flushing

- ♦ Used in the process for cleaning out cattle and calves nostrils and mouths.
- ♦ Heads are suspended from hook while mouth and nostrils are thoroughly flushed.
- ♦ Cabinet features a removable stainless steel swivel hook.
- ♦ 6' of 3/4" hose with fittings on each end.
- ♦ A special self-closing flushing valve fitted with 12" by 3/8" diameter Stainless Steel Tube to reach the necessary areas.
- ♦ The bottom of the cabinet slopes to a 4" diameter drain located approximately 3" above the floor.
- ♦ The 6" edge at front of cabinet eliminates splash out during washing operation.
- ♦ Top, sides and front of cabinet are reinforced with hemmed edges for added strength.
- ♦ The cabinet is 66" Tall overall and is constructed of heavy duty 14 gauge T-304 Stainless Steel.
- ♦ Available in three sizes 24" x 24", 30" x 30" and 36" x 36" Length and Width.

**24" x 24" x 66"** (L,W,H) - Stainless Steel

**CB101001**

**30" x 30" x 66"** (L,W,H) - Stainless Steel

**CB101002**

**36" x 36" x 66"** (L,W,H) - Stainless Steel

**CB101003**

**Head Flushing Nozzle**

**CB213001**

**Hose for Head Flushing Nozzle**

**CB210001**



## Skinning Cradle

- ♦ Our portable skinning cradle is designed to keep the carcass off the floor for clean hides, free of blood and raised to an easier working level.
- ♦ Designed for legging and siding beef or for skinning hogs.
- ♦ Constructed of 1-1/2" T-304 stainless steel pipe with cross-supports of 3/8" x 2-1/2" stainless steel bars.
- ♦ Features width adjustment that is simple and quick, suitable for any size beef.
- ♦ Unit is equipped with two 5" x 2" rigid and four swivel casters with a foot action floor stop mounted on swivel end.

**Skinning Cradle** - Stainless Steel

**CD101004**

**Contact us with your Custom Made needs.**

**Quantity Discounts Available!**



# Beef Handling

## ***Single Rail Beef Lander***

- ♦ Used for landing carcass on a single dressing rail.
- ♦ Our Lander is made of Heavy Gauge Steel construction and is continuously welded for added strength.
- ♦ Lander assembly is a 6 foot track section - 1/2" x 2-1/2" track.
- ♦ Trolley landing system consists of this track section and the Beef Spreader (sold separately) shown below.
- ♦ Landers have a painted finish.
- ♦ **Options: 10" Hanger or 12" Hanger.**

**10" Steel Lander** - 16" x 72" x 6" (W,L,D) **LR111001**  
**12" Steel Lander** - 18" x 72" x 6" (W,L,D) **LR111002**



## ***Painted Beef Spreader***

- ♦ Our Spreader is constructed of solid steel round and flat bar, and is also continuously welded for added strength.
- ♦ Precision cut solid steel plate hooks come standard on Spreaders.
- ♦ The 48" Beef Spreader has two hooks that engage the top frame of trolleys to raise spreader above track.
- ♦ Spreaders have a painted finish.

**Steel Spreader** - 48" between Hooks **SD111001**



## ***Painted Beef Tree***

- ♦ Features heavy duty welded steel rod construction with painted finish.
- ♦ 48" Spread between the Stainless Steel Hooks.
- ♦ Vertical height above hooks is 13 inches.
- ♦ Supplied with two 9" Stainless Steel Hooks.

**Painted Steel Tree** - 48" between Hooks **SD103000**



## ***Heart & Chain Shackle***

- ♦ Used to hoist and hang the heaviest beef on the bleeding rack.
- ♦ Heavy duty hook attached to 3/8" welded link chain connected to a Heart shaped welded ring.

46" Long x 3/8" welded link chain **SC112001**



## ***Weasand Rod***

- ♦ Our Weasand Rod is constructed with 100% rustproof T-304 Stainless Steel.
- ♦ The 1" diameter handle is 5" long and is fully welded to a 24" long heavy duty rod that is 3/8" in diameter compared to the smaller standard of 5/16" diameter rod.
- ♦ The Weasand Loop is 2" in diameter.
- ♦ Dimensions: (L x W): 24" long with 5" handle

**Weasand Rod** - 100% Stainless Steel **RD101002**

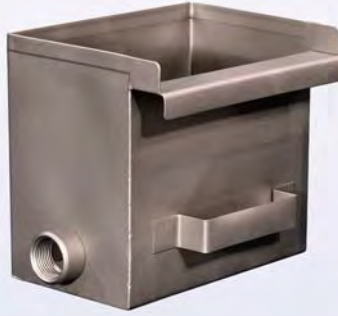


***Save On Freight - Drop Shipment Service Available.***

# Sterilizers

SZ101001 - Knife Sterilizer

SZ101004 - Knife Sterilizer



## Knife & Cleaver Sterilizers

- ◆ Our Sterilizer Boxes are constructed with rustproof heavy gauge T-304 StainlessSteel and are ruggedly built.
- ◆ Features built-in flange to hang from the lavatory rim.
- ◆ Overflow lip channels excess water into lavatory bowl.
- ◆ Boxes are top opening and can be used with immersion heaters or steam lines.

Knife Sterilizer Box Dimensions: (L x W x H) 9" x 6.5 x 8"

**No Hole - Stainless Steel SZ101001**

**With Coupling & Guard - Stainless Steel SZ101004**

Cleaver Sterilizer Box Dimensions:

(L x W x H) 11" x 6.5" x 22"

**No Hole - Stainless Steel SZ101005**

**With Coupling & Guard - Stainless Steel SZ101006**



Model "A" - Steam Coupling

## Pan & Shovel Sterilizers

- ◆ The Pan & Shovel Sterilizer can be used for sterilizing pluck & viscera inspection pans, shovels and head loops.
- ◆ We offer two versions of this Stainless Steel Sterilizer, one with a Steam Connection and the other with a Electrical Heater coupling.
- ◆ Features a 1" overflow on side unit & a drain in the bottom.
- ◆ Constructed with heavy gauge T-304 Stainless Steel.
- ◆ Features sanitary rounded corners & smooth welded seams.

Pan & Shovel Dimensions:

(L x W x H x I.D.) 34" x 14" x 37-1/2" x 30"

**Steam Coupling - Stainless Steel SZ101011**

**Electric Coupling - Stainless Steel SZ101015**



## Saw Sterilizers

- ◆ Saw Sterilizers come in three sizes.
- ◆ **Model A** - is for use with all other saws on the floor.
- ◆ **Model B** - for use with "L" type on-the-rail beef breastbone openers and with hog breastbone openers, air or electric.
- ◆ **Model AH** - is for use with platforms.
- ◆ Constructed from heavy gauge T-304 Stainless Steel
- ◆ Adjustable Legs.
- ◆ Water Inlet Fittings.
- ◆ Steam Supply Fitting.
- ◆ Overflow Tube and Drain.
- ◆ Optional: Electric Emerson Style Heater with Element Guard.

Model "A" Dimensions:

(L x W x D x O. A. H) 34" x 12" x 24" x 32"

**"A" - Steam Coupling - Stainless Steel SZ101012**

**"A" - Electric Coupling - Stainless Steel SZ101017**

Model "B" Dimensions:

(L x W x D x O. A. H) 22" x 12" x 12" x 32"

**"B" - Steam Coupling - Stainless Steel SZ101013**

Model "AH" Dimensions:

(L x W x D x O. A. H) 24" x 12" x 12" x 50"

**"AH" - Steam Coupling - Stainless Steel SZ101014**

**Contact us with your Custom Made needs.  
Quantity Discounts Available!**



# Processing & Dispensing

## Head Loop Holder

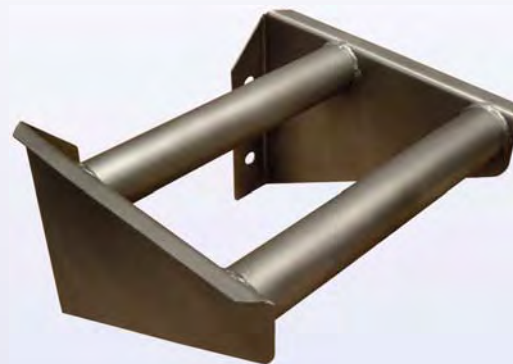
- ◆ We manufacture this mounted head loop holder with heavy gauge T-304 rustproof Stainless Steel.
- ◆ All seams are continuously welded for strength.
- ◆ Bolts to wall so it requires less floor space.
- ◆ Accepts both Calf and Cattle Loops. Sold Separately.

Head Loop Holder Dimensions:

(L x W x H) 12" x 13.5" X 9.5"

**Stainless Steel Holder**

**HL101001**



## Head Loop

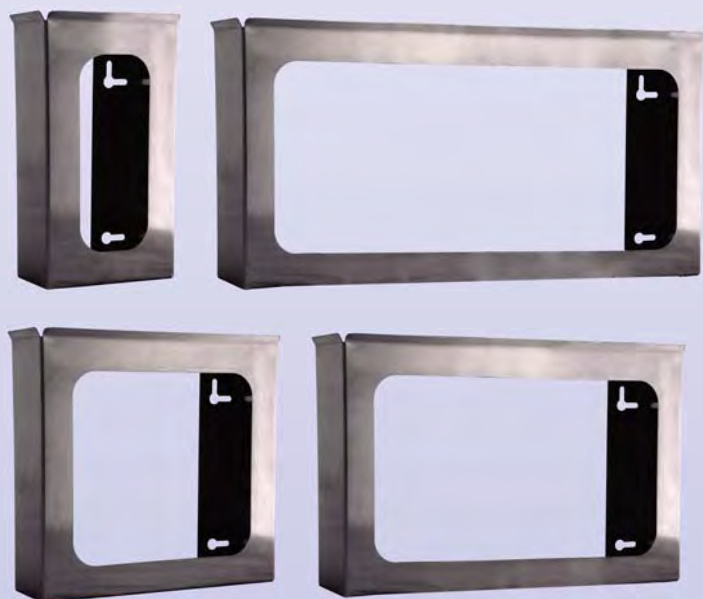
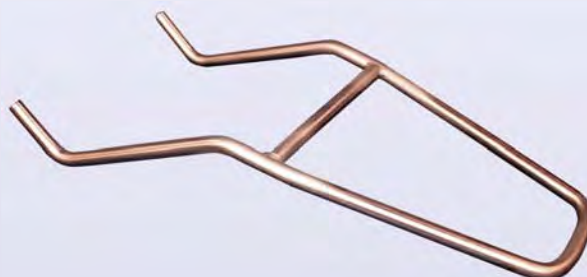
- ◆ Our Calf and Cattle Head Loops, are also made with heavy duty 5/8" round rod T-304 Stainless Steel.
- ◆ Designed so that you may use either the Calf Loop or the Cattle Loop with our Head Loop Holder - Sold Separately

**Stainless Steel - Calf Loop 24" long**

**LP101001**

**Stainless Steel - Cattle Loop 24" long**

**LP101002**



Single Step depresses pump to dispense liquid.

## Glove Dispenser

- ◆ Our Glove Dispensers are constructed from T-304 stainless steel which is easy to clean and disinfect and it accommodates most glove box sizes.
- ◆ The dispensers design allows it to be mounting either horizontally or vertically and is very easy to refill.

**Single Glove Box Holder EC101006**

**Dual Glove Box Holder EC101002**

**Triple Glove Box Holder EC101007**

**Quad Glove Box Holder EC101008**

## Wall Mount Holder

- ◆ Constructed from 100% T-304 Stainless Steel
- ◆ Holder is used with a pump style gallon bottle for dispensing soaps or liquids (not Included).
- ◆ Designed to mount to a vertical wall (hardware not included) and can be used in wet or dry environments.

**Wall Mount Holder**

**HL101002**

## Foot Activated Dispenser

- ◆ Hands-Free design eliminates cross-contamination. It is suitable for wet or dry environments.
- ◆ Free standing foot operated Hand Sanitizing dispenser constructed from heavy gauge T-304 Stainless Steel.
- ◆ Holds a 1 gallon pump style container of your favorite hand sanitizing liquid (not included).

**Foot Dispenser**

**SN101027**

**Save On Freight - Drop Shipment Service Available.**

# Tote Dolly



- ◆ We've designed our Tote Dollies to be strong and lightweight; their principle use is for the transportation or storage of totes.
- ◆ Your choice of material - Stainless Steel or Aluminum.
- ◆ Your choice of Fully Welded construction or Knock-Down models to save on shipping.
- ◆ Both aluminum and stainless steel models are Rustproof and are constructed with heavy wall 1" square tube.
- ◆ Units are equipped with 5" swivel casters (2 with brake and 2 without brake).
- ◆ Knock-down models come with tool needed for easy assembly.
- ◆ Knock-Down Models (Ship UPS) & Fully Welded Models (2, 4 & 6 Ship Truck).
- ◆ All designed to accommodate a 16" x 25" x 8-1/2" Tote (Tote not included).
- ◆ Replacement casters available - see "Side by Side Tote Dollies."
- ◆ Aluminum units have Formed Tops, Stainless Steel units have Square Tops.

**(Note: Plastic totes are not included)**



## Single Tote

Dual Tote Dimensions: (L x W x H): 15-1/4" x 28-1/2" x 16"

**Aluminum** Construction - Fully Welded **DL102006**

**Stainless Steel** Construction - Fully Welded **DL101044**

## Dual Tote

Dual Tote Dimensions:

(L x W x H): 15-1/4" x 28-1/2" x 33"

**Aluminum** Construction - Fully Welded **DL102007**

**Aluminum** Construction - Knock Down **DL102012**

**Stainless Steel** Construction - Fully Welded **DL101039**

**Stainless Steel** Construction - Knock Down **DL101007**

## Quad Tote

Quad Tote Dimensions:

(L x W x H): 15-1/4" x 28-1/2" x 52-1/2"

**Aluminum** Construction - Fully Welded **DL102008**

**Aluminum** Construction - Knock Down **DL102013**

**Stainless Steel** Construction - Fully Welded **DL101047**

**Stainless Steel** Construction - Knock Down **DL101008**

## Six Tote

Six Tote Dimensions: (L x W x H): 18-3/8" x 25-1/2" x 70"

**Stainless Steel** Construction - Knock Down **DL101009**



**Contact us with your Custom Made needs. Quantity Discounts Available!**



# Side by Side Tote Dolly

- ◆ Made with the same heavy duty 1" square tube construction as our regular Tote Dollies, these Side by Side units have a wide stance and low center of gravity making them extremely stable for the transportation or storage of totes.
- ◆ Your choice of material - Stainless Steel or Aluminum.
- ◆ Your choice of Fully Welded construction or Knock-Down models to save on shipping.
- ◆ All Knock-Down and 2 Tote models ship UPS.
- ◆ Dollies are equipped with 5" swivel casters (2 with brake and 2 without brake).
- ◆ All Tote Dollies are design to accommodate 16" x 25" x 8-1/2" Totes (Tote Not Included).
- ◆ Knock-Down Models come with tool needed for easy assembly.
- ◆ Replacement casters available.

**(Note: Plastic totes are not included)**

## Dual Side by Side

Dual Side by Side Tote Dimensions:

(L x W x H): 34" x 24" x 20"

**Aluminum** Construction - Fully Welded **DL102042**

**Stainless Steel** Construction - Fully Welded **DL101034**

## Quad Side by Side

Quad Side by Side Tote Dimensions:

(L x W x H): 34" x 28" x 27-1/2"

**Aluminum** Construction - Fully Welded **DL102040**

**Aluminum** Construction - Knock Down **DL102041**

**Stainless Steel** Construction - Fully Welded **DL101035**

**Stainless Steel** Construction - Knock Down **DL101033**

## Six Side by Side

Six Side by Side Dimensions:

(L x W x H): 34" x 28" x 39-1/2"

**Aluminum** Construction - Knock Down **DL102014**

**Stainless Steel** Construction - Knock Down **DL101010**

## Casters

Recommended Replacement Caster for Single and Side by Side Tote Dollies

5" Stem type without brake (sold each)

**WC203005**

5" Stem type with brake (sold each)

**WC203006**



**Save On Freight -  
Drop Shipment Service Available.**

# Platter Dolly



10 Platter - Stainless Steel



10 Platter - Aluminum

- ♦ Both Stainless Steel and Aluminum models are made from heavy wall 1" square tube.
- ♦ Units are equipped with 5" swivel casters. (2 with brake and 2 without brake.)
- ♦ Knock-Down Models come with tool needed for assembly.
- ♦ End Load - Knock-Down (Ships UPS)
- ♦ End Load - Fully Welded (Motor Freight)
- ♦ Replacement casters available.

**(Note: Platters are not included)**

## High 10 Platter - End Load

High 10 Platter Dolly Dimensions:

(L x W x H): 20-1/2" X 28-1/2" X 58"

- ♦ 4-3/4" Spacing between platters.

**Aluminum Construction - Fully Welded**

**DL102016**

**Stainless Steel Construction - Knock Down**

**DL101004**

## High 20 Platter - End Load

High 20 Platter Dimensions:

(L x W x H): 20-1/4" X 28" X 69-1/2"

- ♦ 2-7/8" Spacing between platters.

**Aluminum Construction - Fully Welded**

**DL102018**

**Stainless Steel Construction - Knock Down**

**DL101013**

20 Platter - End Load

20 Platter - Side Load



## High 20 Platter - Side Load

High 20 Platter Dimensions:

(L x W x H): 20-1/4" X 28" X 69-1/2"

- ♦ 2-7/8" Spacing between platters.

**Aluminum Construction - Fully Welded**

**DL102019**

**Stainless Steel Construction - Knock Down**

**DL101014**



## Replacement Casters

Recommended Replacement Caster for Platter Dollies

5" Stem type without brake (sold each)

**WC203005**

5" Stem type with brake (sold each)

**WC203006**

**Contact us with your Custom Made needs.**

**Quantity Discounts Available!**



# Tables

## HD Cutting Board Table

- ◆ Our heavy Duty table frame is fully welded and is crafted from heavy gauge T-304 Stainless Steel structural angle and pipe.
- ◆ The standard width is 36" and the available lengths are 6', 8' and 10' with 100% usable working area.
- ◆ Provided with a USDA Approved - Reversible 3/4" Poly Top.
- ◆ The board tabs are welded on the table and will hold Poly Top boards up to 1" Thick.
- ◆ Legs will adjust up to 6" for use in leveling on uneven floors.
- ◆ Tables are extremely sturdy and are easy to clean.
- ◆ Shipped by Motor Freight only.

**6' x 36" x 34"** - 4 Legs - Stainless Steel **TB101016**  
**8' x 36" x 34"** - 6 Legs - Stainless Steel **TB101017**  
**10' x 36" x 34"** - 6 Legs - Stainless Steel **TB101018**  
**Repl. Adjustable foot with wear pad - each TB201041**  
**Replacement Poly Tops available - Call for pricing**



## HD Wrapping Table

- ◆ Like our Cutting Board Table this Heavy Duty table frame is fully welded and is crafted from heavy gauge T-304 Stainless Steel structural angle and pipe.
- ◆ The standard widths are 32" wide and the available lengths are 6', 8', & 10' long with 100% usable working area.
- ◆ Provided with a removable one piece Stainless Steel Top.
- ◆ Legs will adjust up to 6" for use in leveling on uneven floors.
- ◆ Tables are extremely sturdy and are easy to clean.
- ◆ Shipped by motor freight only.

**6' x 32" x 34"** - 4 Legs - Stainless Steel **TB101019**  
**8' x 32" x 34"** - 6 Legs - Stainless Steel **TB101020**  
**10' x 32" x 34"** - 6 Legs - Stainless Steel **TB101021**  
**Repl. Adjustable foot with wear pad - each TB201041**



## Mini Stuffing Table

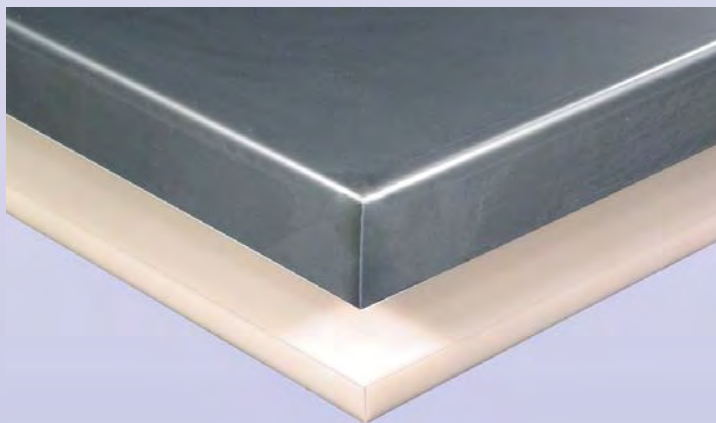
- ◆ Sturdy but light, this table is extremely versatile and may be ordered with the Operator Notch section located on either side of the table. ("Operator Right" pictured)
- ◆ Fully manufactured from rustproof T-304 Stainless Steel.
- ◆ Our Mini Stuffing Table will ship knock-down and is easily assembled in minutes.
- ◆ Working surface measures 32" wide x 56" long and is constructed from heavy 14-ga. seamless stainless steel.
- ◆ 16 gauge polished round SS legs are 1-5/8" in diameter with sturdy rigid-truss cross supports.
- ◆ Feet and Legs allow up to 5" of over all height adjustment.
- ◆ 2" Sink-Type Drain.

**58" x 33" x 28" - 33"** (L,W,H)-Stainless Steel **TB101030**  
**Bullet Style Adjustable Foot Stainless Steel TB201007**



**Save On Freight - Drop Shipment Service Available.**

# Tables & Accessories



**Board Clip**  
for use with Poly Top Tables

Board Clip - Stainless Steel - Sold Each

**TB201101**

## Standard Tables

- ♦ Tables are rugged in design and will provide years of service at a considerable price savings over our heavy duty packing house tables.
- ♦ Our table frames are constructed using square tube T-304 Stainless Steel and are available in two styles and sizes.
- ♦ Optional Tops include: USDA Approved - Reversible 3/4" Poly Top or Stainless Steel Top.
- ♦ These Tables come complete with durable poly inserts that will accept a Stem Caster (sold separately).
- ♦ Legs are adjustable for leveling table.
- ♦ 6' table has four 34" legs - 8' table has six 34" legs.
- ♦ Each table is shipped with the tool needed for assembly.
- ♦ These tables are shipped knock-down but when assembled they are as sturdy as a fully welded table.

**Poly Top - 6' x 30" x 34" - 4 legs**

**TB101012**

**Poly Top - 8' x 30" x 34" - 6 legs**

**TB101013**

**Stainless Steel Top - 6' x 30" x 34"-4 legs**

**TB101014**

**Stainless Steel Top - 8' x 30" x 34"-6 legs**

**TB101015**

## Replacement Stainless Steel Table Top

- ♦ Constructed from Heavy 16 gauge T-304 Stainless Steel this one piece table top is easily removed.
- ♦ Features a 2" down flange edge for added strength.
- ♦ No tools are needed to install or remove top.
- ♦ Available in 72" or 96" lengths x 30" depth.

**72" x 30" - Stainless Steel**

**TB201015**

**96" x 30" - Stainless Steel**

**TB201016**

## Replacement Poly Table Top

- ♦ Made of sanitary polyethylene with a reversible slip resistant pebble finish that won't dull knives.
- ♦ Surface will not absorb odors & can be cleaned with soap and water.
- ♦ USDA requires that all boards can be removed by a single worker.
- ♦ Pre-Cut 3/4" thick by 36" for the 6' " table (Requires 2).
- ♦ Pre-Cut 3/4" thick by 48" for the 8' " table (Requires 2).
- ♦ Poly Top held into place by use of "Board Clips"

**36" x 30" x 3/4" - Poly Top Sold Individually**

**TB209000**

**48" x 30" x 3/4" - Poly Top Sold individually**

**TB209001**

**Contact us with your Custom Made needs.**

**Quantity Discounts Available!**



# Standard Table Accessories

**Customize our 6' or 8'  
"Standard Tables"**

These items can be easily  
field installed at any time.

**Build It Your Way,  
a piece at a time,  
or all at once.**



**A**

## Overhead Shelf

- ◆ When even more storage space is required you may add our Overhead Shelf which is constructed from heavy 16 gauge T-304 Stainless Steel to our Standard Table.
- ◆ Manufactured to match the full length of the table.
- ◆ It features one piece Stainless Steel design and has a 2" back splash with formed edges for added strength.
- ◆ Hardware and installation tool provided for easy assembly.

**12" x 72" - Stainless Steel**

**TB201106**

**12" x 96" - Stainless Steel**

**TB201107**

**B**

## Back Splash

- ◆ Constructed from heavy 16 gauge T-304 Stainless Steel, this unit is to be **used with the Poly Top Tables only.**
- ◆ This 6" high Back Splash is designed to match the full length of the table.
- ◆ It features a one piece Stainless Steel design, has formed edges and is removable for easy cleaning.
- ◆ No mounting accessories needed.

**6" x 72" - Stainless Steel**

**TB201104**

**6" x 96" - Stainless Steel**

**TB201105**

**C**

## Lower Shelf

- ◆ Customize our Standard table by adding this Lower Shelf Constructed from heavy 16 gauge T-304 Stainless Steel, this shelf is a user friendly add on for storage space.
- ◆ Designed to Drop in and Lift out for easy clean up.
- ◆ Manufactured to match the full length of the table.
- ◆ It features one piece Stainless Steel design and has double formed flange edges for added strength.
- ◆ Hardware and installation tool provided for easy assembly.

**25" x 72" - Stainless Steel**

**TB201010**

**25" x 96" - Stainless Steel**

**TB201011**

**Lower Shelf Support Bracket Replacement** **TB201013**

**D**

## Optional Casters

- ◆ Customize the Standard Table with mobility, by adding 5" diameter stem style swivel casters.
- ◆ Wheels lock at all four corners for stability while working.

**4 with Brakes, for 6' table-Stem Caster Kit** **TB2KT001**

**6 with Brakes, for 8' table-Stem Caster Kit** **TB2KT002**

**5" Swivel Caster with Brake - Repl. (each)** **WC203002**

**E**

## Replacement Accessories

- ◆ Replacement Leg and Leg inserts for our Standard Table
- ◆ All items sold individually.

**Table Leg - Stainless Steel (each)**

**TB201021**

**Table Leg Insert for Caster - Plastic (each)**

**TB209004**

**Save On Freight - Drop Shipment Service Available.**

# Equipment Table & Receivers Stand



## Standalone Table

- ◆ Our Stainless Steel Equipment Tables are designed to be used in food preparation facilities, kitchens & restaurants.
- ◆ They feature heavy-duty all welded construction which makes them ideal as a stand-alone equipment stand or it can be placed where additional work space is needed.
- ◆ Work surface is fabricated from heavy-duty 14 gauge T-304 Stainless steel.
- ◆ Features a full size middle storage shelf
- ◆ Unit is suitable for wet or harsh environments and is easy to clean.
- ◆ It is equipped with adjustable bullet style feet for easy leveling and will arrive fully assembled.

**20" X 24" X 30"** (L, W, H) - Stainless Steel **TB101127**

**20" X 30" X 30"** (L, W, H) - Stainless Steel **TB101161**



## Wall Mount Receivers Desk

- ◆ Our Wall Mounted Receivers Desk is constructed from heavy duty 18-gauge T-304 Stainless Steel for durability and is ideal for harsh or corrosive environments.
- ◆ Desk provides a large writing surface and features three storage compartments for paper, pens or supplies.
- ◆ Lockable desktop compartment includes two keys.
- ◆ Desk includes 2 under frame Stainless Steel wall support mounting brackets.

**23" X 24" X 12"** (L, W, H) - Stainless Steel **DK101001**



## Receivers Desk - Mobile Conversion

- ◆ Add the optional Mobile Stand if a moving work area is needed.
- ◆ Optional stand is constructed with 10 gauge T-304 stainless steel and rolls easily on four 5" swivel casters (2 supplied with brakes).
- ◆ The mobile stand raises working height to 42" and includes a stainless steel under shelf.
- ◆ The Mobile Stand ships knocked-down to save on freight and comes with all necessary hardware for easy assembly.

**23" X 24" X 12"** (L, W, H) - Stainless Steel **DK101003**

**Contact us with your Custom Made needs.**

**Quantity Discounts Available!**



# Locker Room Equipment

## ***Stainless Steel Boot Hanging Rack***

- ◆ Our Mobile Boot Rack is constructed from heavy duty 1" square T-304 Stainless Steel tubing.
- ◆ It holds four pair of boots per level and has six levels, for a total capacity of 24 pairs of boots.
- ◆ Boot supports posts are on 5" centers.
- ◆ Corrosion Resistant and fully washable.
- ◆ Glass Bead blast smooth finish.
- ◆ Boot Rack is equipped with 4" Stainless Steel / White Polyolefin casters. (2 swivel and 2 rigid)
- ◆ Fully Welded and assembled - ready to us.  
(Ships by Motor Freight Only)
- ◆ Overall dimension LxWxH - 48" x 25-1/2" x 79-3/4"

**24 Pair** - Stainless Steel Bench

**RC101008**

**4" Swivel Caster** - Replacement

**WC201020**

**4" Rigid Caster** - Replacement

**WC202018**



## ***Stainless Steel Bench***

- ◆ Manufactured with 100% T-304 Stainless Steel and are rustproof and corrosion resistant.
- ◆ Legs are fabricated from 12 gauge Stainless Steel and include mounting holes allowing unit to be bolted to floor.
- ◆ Bench surface is fabricated from 14 gauge Stainless Steel.
- ◆ Standard bench surface is 12" wide x 1-1/4" high, with an overall height of 18".
- ◆ They are easy to assemble, no special tools required.
- ◆ Ships Knocked Down for additional freight savings.
- ◆ Ideal locker room solution for areas prone to rust and sanitation concerns.

### ***Custom Options:***

- ◆ Custom Sizes
- ◆ Material Thickness

**48" Length** - Stainless Steel Bench

**BH101000**

**72" Length** - Stainless Steel Bench

**BH101002**

**96" Length** - Stainless Steel Bench

**BH101003**



## ***Stainless Steel Stool***

- ◆ This 100% T-304 Stainless Steel Stool is designed to be used wherever corrosive resistant applications are required.
- ◆ Features a roomy 14" square seat with rounded corners.
- ◆ 30" overall height.
- ◆ Fully welded T-304 Angle Stainless Steel legs and foot support.
- ◆ Glass bead blast finish.
- ◆ Stool is capable of withstanding wet, harsh and demanding environments
- ◆ The Heavy-duty Fully Welded construction will provide long lasting service.

**Stool** - Stainless Steel, Fully Welded

**OFFFN001**



***Save On Freight - Drop Shipment Service Available.***

# **DC TECH INC.**

**Custom Stainless Steel & Aluminum Fabrication**

DC Tech, Inc. is a manufacturer of stainless steel, aluminum, galvanized and carbon steel equipment. Our company was founded in 1928 by C. E. Mitchum as the Dairy & Creamery Equipment Company establishing a tradition of quality work at a fair price backed by personal service, and the Mitchum family continues that tradition.

In the late 1940's we began manufacturing equipment for several of the largest meat packinghouse equipment suppliers in the Midwest. Since then we have specialized in grocery store, restaurant and food/material handling equipment as well as equipment for the meat packing industry. The items shown in this catalog are available exactly as shown or may be customized to meet your customer's requirements.

Over the years we have manufactured equipment outside the food industry including surgical trays for hospitals and doctors offices, swimming pool guttering, linen sorting tables, automotive accessories, skateboard park equipment, popcorn processing equipment and much more. We have the experience and ability to manufacture a prototype or go into full-scale production runs.

It is our goal to produce the best product for the lowest price. And we back that up with great service and support you can depend on. We will do everything possible to earn your trust and your business. Whatever your customers requirements may be when it comes to stainless steel or aluminum equipment, please consider DC Tech.

Thank you,  
B. W. Mitchum  
President

With our latest addition we are now able to laser cut Stainless Steel and Aluminum to the most demanding specifications.

